

# ROOF SOLAR SOLUTIONS

TOPTHERM, KAMENICE NAD LIPOU, CZ

ARZIA SOLAR



INSTALLED CAPACITY: **115** kWp

---

ANNUAL PRODUCTION: **121** MWh

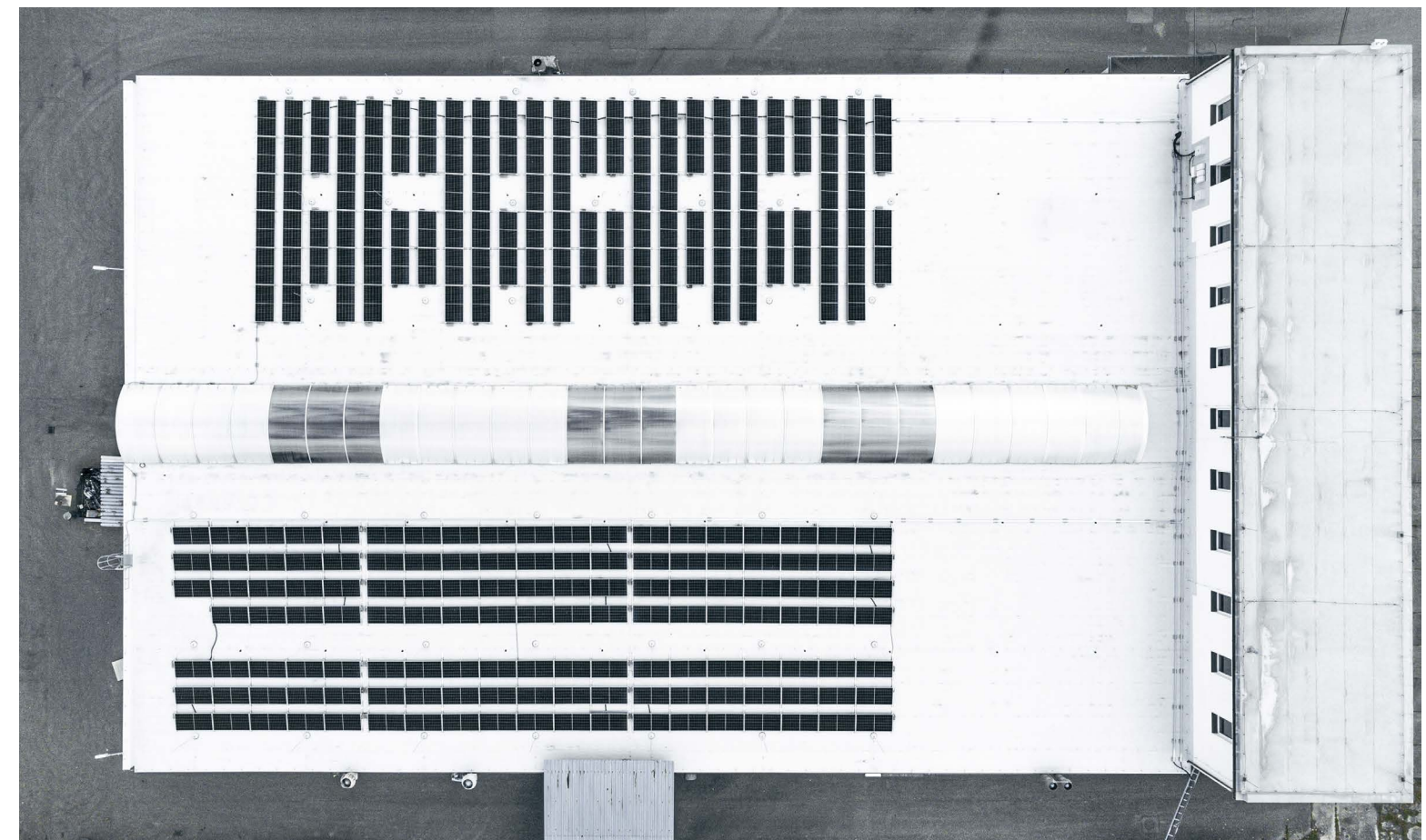
---

CO<sub>2</sub> SAVINGS: **48.5** Ton / year



**TopTherm, located in Kamenice nad Lipou, specializes in manufacturing components for the automotive industry.**

- > PV Installed Capacity: 115.2 kWp
- > Number of Panels: 256 pcs
- > Type of Panel: LONGi LR4-72HIH
- > Number of Inverters: 1 pcs
- > Type of Inverter: SolarEdge SE100K / Optimizers P950
- > Battery Storage Capacity: 92.4 kWh



# ROOF SOLAR SOLUTIONS

TOPTHERM, KAMENICE NAD LIPOU, CZ

# ARGIA SOLAR

